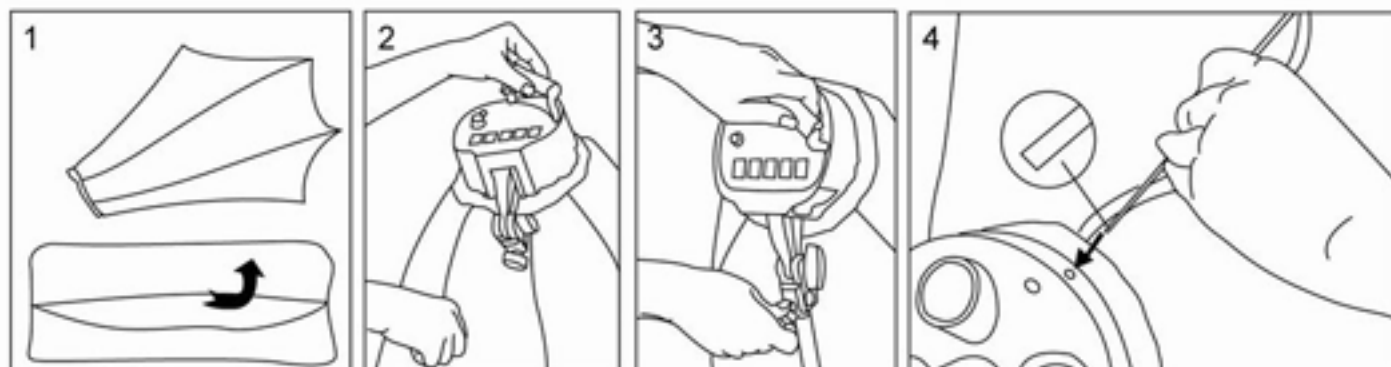


VL-9026S manual operations

Installation steps

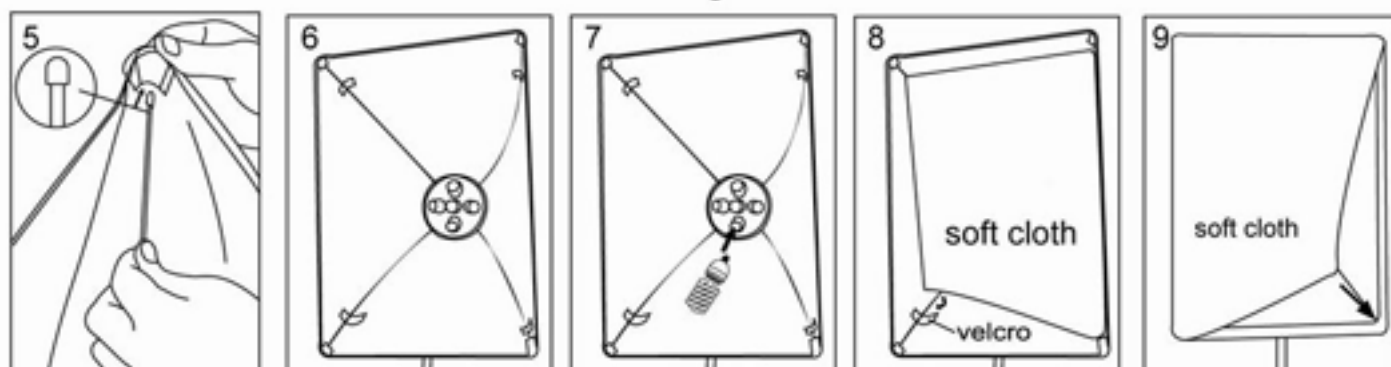


1. Please put out the soft box from the bag.

2. Put the lamp head into the soft box.

3. Insert the lamp head into the light stand.

4. Put the supporting bar into the hole on the lamp head.



5. Inset the other head of the supporting head into the soft box.

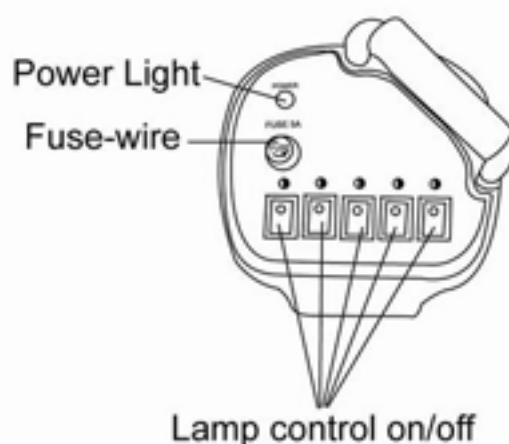
6. The same as other three supporting bar.

7. Screw 5 lamps into the lamp holder.

8. Stick the soft cloth on the velcro.

9. Finally put the front diffuser on.

Power	45W*5
Color temp	5500K
Voltage	110V,220V
CRI	80
Size	50*70cm
Light Stand	2.1m



SoftBox light

*VL-9026S can contain four light bulbs 45W*5 .

*E27 screw base.

Notice:

1. Fasten the bulb and energize carefully.
2. Don't tear down screw when it on.
3. Don't fall down light equipment the bulb will break.
4. Don't tear down light equipment, bulb, wire without permission.